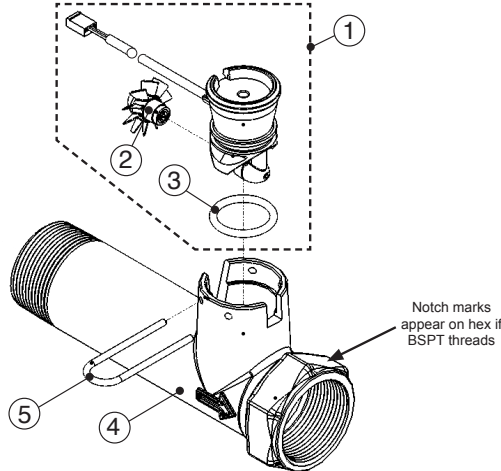


Water Specialist ***1.5" NPT or BSPT Meter Assembly***



- **1½" Inline meter suited for commercial/industrial applications**
- **Lead Free Brass construction**
- **Service flow range 0.5 to 60 gpm**
- **Meter accuracy ±5%**
- **Reliable and proven turbine design**
- **15-foot cable included**
- **1½" NPT or BSPT connections**

Order No: V3040-15 • Description: WS1.5" Meter Asy NPT 15-Foot
OR
Order No: V3040BSPT-15 • Description: WS1.5" Meter Asy BSPT 15-Foot



Drawing No.	Order No.	Description	Quantity
1	V3221	WS Remote Meter Asy 15 Ft Cord (includes V3118-01 and V3105)	1
2	V3118-01	WS1 Turbine Asy	1
3	V3105	O-Ring 215	1
4	V3401-01	WS1.5 Meter Housing NPT	1
	V3401BSPT-01	WS1.5 Meter Housing BSPT	
5	V3223	WS2 Meter Clip	1
Not Shown	V3437	WS1.5 Flow Straightener (located inside meter housing)	1

BSPT threads on inlet and outlet ports on the V3401BSPT-01.

Installation

Make connections using the following:

- For V3040-15 WS15 METER ASY 15 FOOT using 1.5" NPT pipe and fittings.
- For V3040BSPT-15 WS15 METER ASY 15 FOOT using 1.5" BSPT pipe and fittings.

When installing the Meter Assembly, it is necessary that the meter be installed in a horizontal position.

WHEN INSTALLING THE METER, MAKE SURE THE ARROW ON THE METER BODY IS GOING THE SAME DIRECTION AS THE WATER FLOW.

THIS WATER METER SHOULD NOT BE USED AS THE PRIMARY MONITORING DEVICE FOR CRITICAL HEALTH EFFECT APPLICATIONS.

The 22 gauge wire crimp terminals are Molex Series 41572 or 40445. The housing connector is Molex Series 2695 White Housing, P/N 22-01-3037.

The housing connector diagram shows the proper installation of the RED, WHITE and BLACK wires for CLACK CORPORATION CONTROL VALVES. When connecting to other manufacturers control valves please contact your original equipment manufacturer for proper wiring instructions.

Wiring:

- The meter must be supplied with a DC voltage between 4 and 24 volts
- The RED wire is positive
- The BLACK wire is negative
- The WHITE wire is the meter output

Calibration:

- For WS1.5" valves select 1.5 if valve software records in gallons and 38 if valve software records in cubic meters.
- The calibration factor for the Meter Assembly is 37 pulses per gallon when used on applications other than WS1.5" valves.
- The meter flow range is 0.75-75 gpm \pm 5% (output signal 0.4 Hz to 47.5 Hz). NOTE: Not all flow monitors will register accurately at either the low or high flow range of this meter. Contact your flow monitor manufacturer for limitations.
- Pressure drop at 75 gpm is 2.7 PSI

